

The SigmaPlot Publication Assistant

The Publication Assistant checks if your graph matches the requirements of the journal or other media where you want to publish your research.

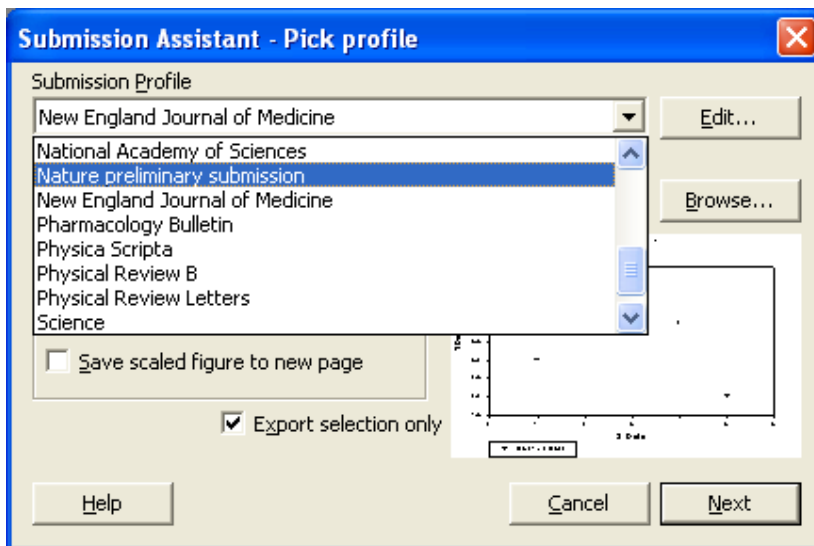
For a series of journals, these requirements are stored in the Publication Assistant. For other journals, publishing houses, company standards etc., you can create new profiles, or adapt existing ones.

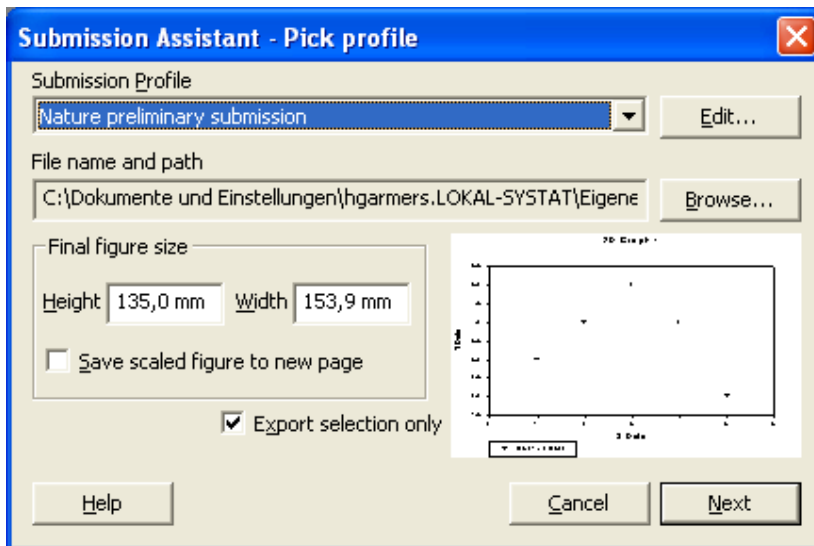
The Publication Assistant checks a series of properties for a match with the standard:

- Font/Font size
- Line thickness
- Graph size
- Resolution
- File size
- Color conversion
- EPS export/PostScript font

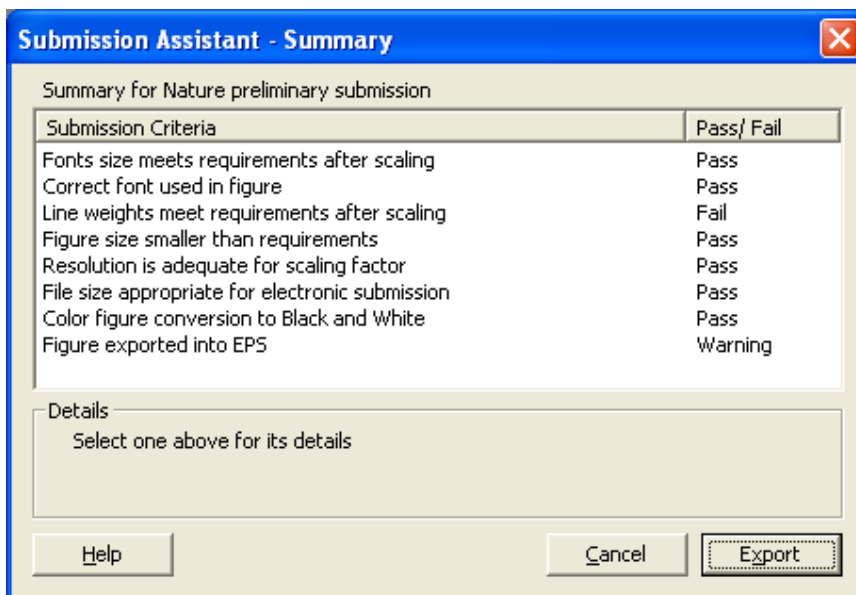
For each criteria you find the hint „Pass/Fail/Warning“, and a comment how to adjust the graph where appropriate.

Select a graph, and select a profile:





Click on „Next“:



The Summary shows which graph criteria match the standard and which do not. Under „Details“ you find suggestions for possible corrections.

Examples:

Line weights meet requirements after scaling	Fail
Figure size smaller than requirements	Pass
Resolution is adequate for scaling factor	Pass
File size appropriate for electronic submission	Pass
Color figure conversion to Black and White	Pass
Figure exported into EPS	Warning

Details

When the figure is scaled the line weights will be smaller than the minimum size of 1, point. Increase the line weights in your original figure to avoid this problem.

Figure exported into EPS	Warning
--------------------------	---------

Details

You are exporting into Encapsulated PostScript format. If you have chosen a PostScript font you may need to include the font with your submission.

The Online Help („Help“ button) in the „Publishing Graphs“ section presents

- a step-by-step guideline
- tips and tricks for global changes of graph properties
- hints for editing and adding profiles
- background information about file formats, resolution, scaling

With a click on the “Export“ button you can then export the graph.